

# Director Of Public Health Annual Report 2024/25

Bath & North East  
Somerset Council

Improving People's Lives

## Working Towards a Fairer B&NES

Reducing Health Inequalities in Bath and North East Somerset

Director of Public Health Annual Report 2024/25

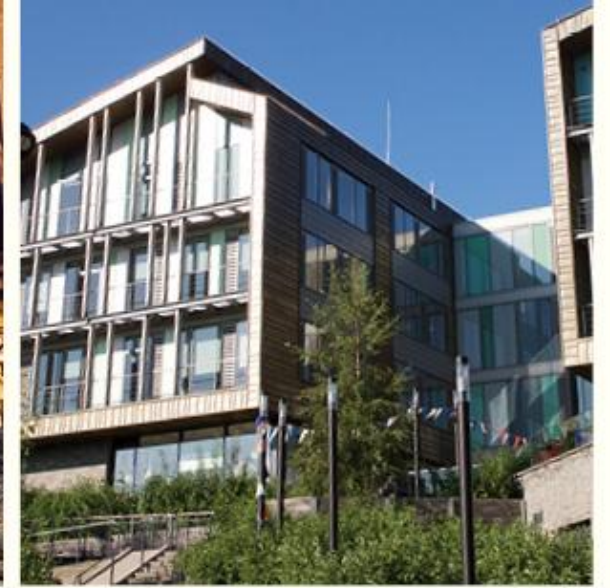


Paul Scott, Interim Director of Public Health  
and Prevention

Ryan Doherty, Public Health Registrar

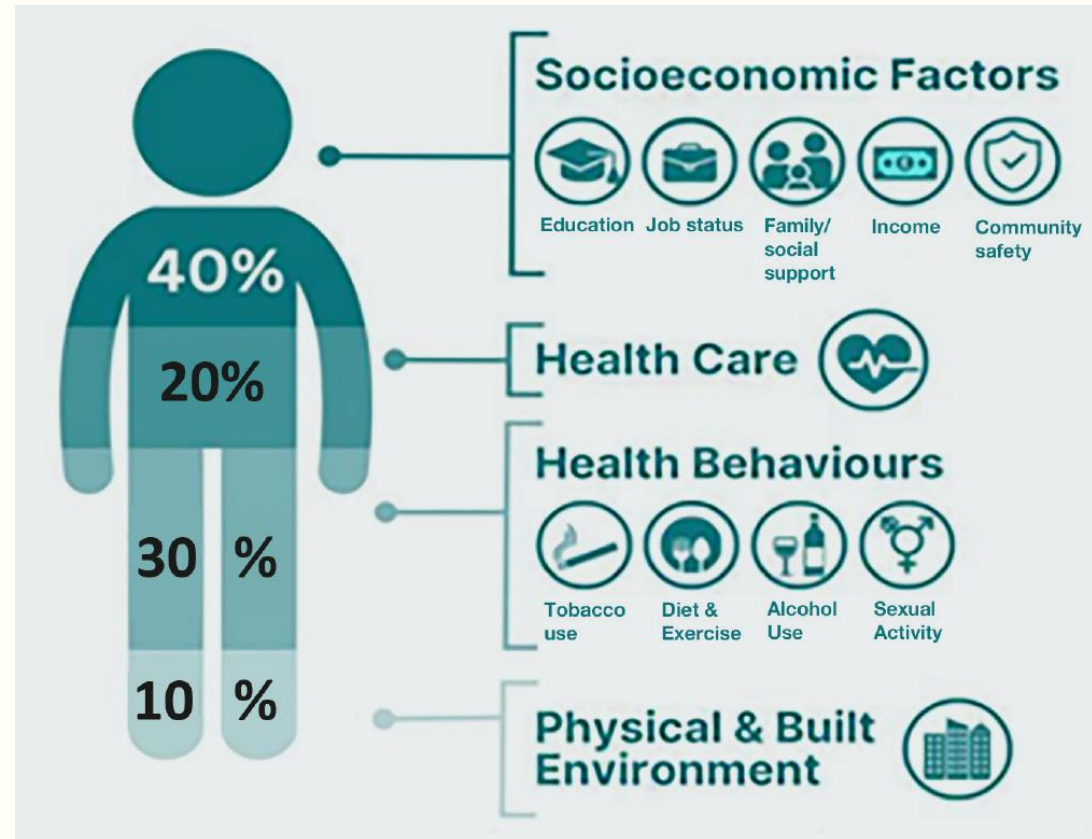
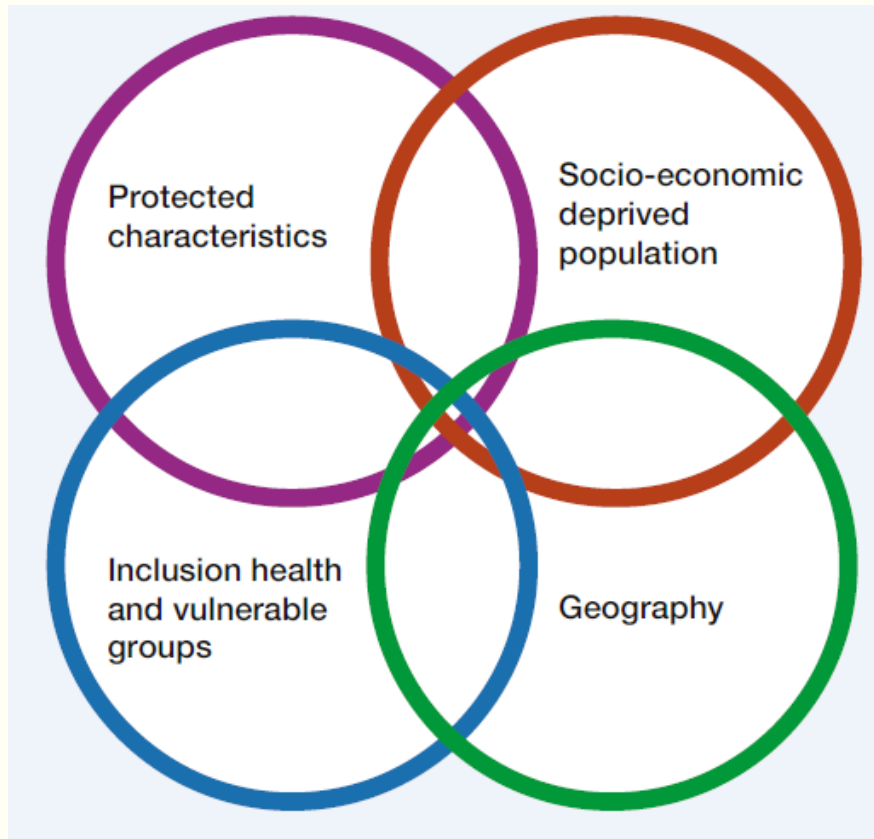
Bath & North East  
Somerset Council

Improving People's Lives



# What Are Health Inequalities?

“Health inequalities are avoidable, unfair and systematic differences in health between groups of people”

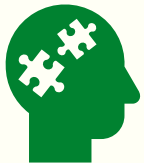


## What Do Health Inequalities Look Like?

Below is a snapshot of some of the inequalities residents of B&NES may face:



The difference in life expectancy between people living in the most and least deprived areas in B&NES is **8 years in men** and **just over 5 years in women**



Someone with a Severe Mental Illness (SMI) in B&NES is **around 5 x more likely to die young** (before 75) than those without a SMI

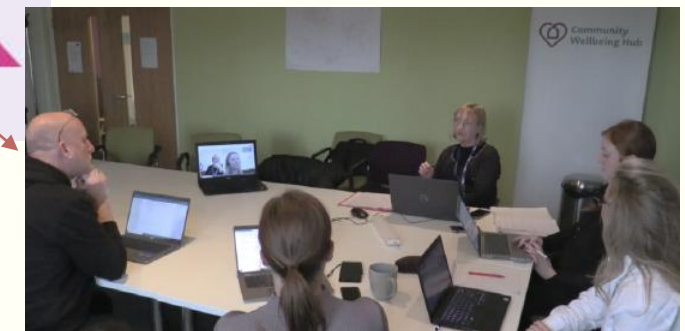
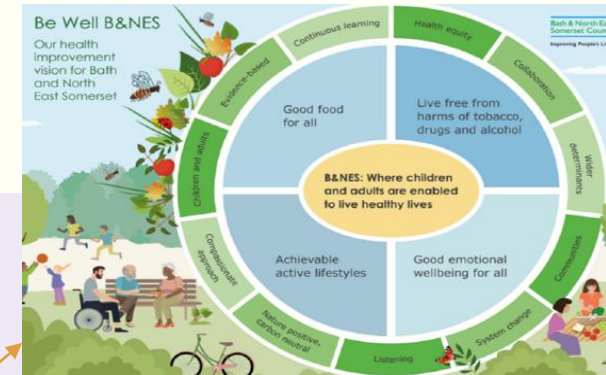


**24.5% of people who have a manual or routine occupation in B&NES are smokers**, compared with only 9.4% of the total B&NES population



People from more deprived areas are **waiting longer for their elective hospital treatment** in BSW than those from less deprived areas

# What Can Be Done About Health Inequalities?



# Report Recommendations

1. System partners to further strengthen the accurate collection and use of inequalities data to allow for better identification of disparities and development of targeted responses; with the ambition that efforts lead to improvements that benefit those with the poorest outcomes first and fastest.
2. Ensure that the emerging Neighbourhood Health Plan for B&NES has a focus on reducing inequalities, including considering how the building blocks of health (wider determinants) can further contribute.
3. Work with the West of England Combined Authority (WECA) to ensure its core levers around the building blocks of health (Transport, Housing, Employment and Skills & Economic Development) are used to reduce child poverty in B&NES as outlined in its [West of England Child Poverty Action Plan](#) (pdf).
4. Embed and deliver the updated Health and Wellbeing Strategy Implementation Plan with its focus on its key pillars to reduce inequalities.
5. In line with the recommendation of the Local Government Association (LGA) Peer Review of B&NES Council of ensuring inequalities features more prominently in the Council's thinking, planning, narrative and delivery; undertake a self-assessment on the current position and develop a Council wide plan.